

DIZ



DOEPKE-INFO-ZEITUNG

FREE CUSTOMER NEWSLETTER BY DOEPKE SCHALTGERÄTE GMBH

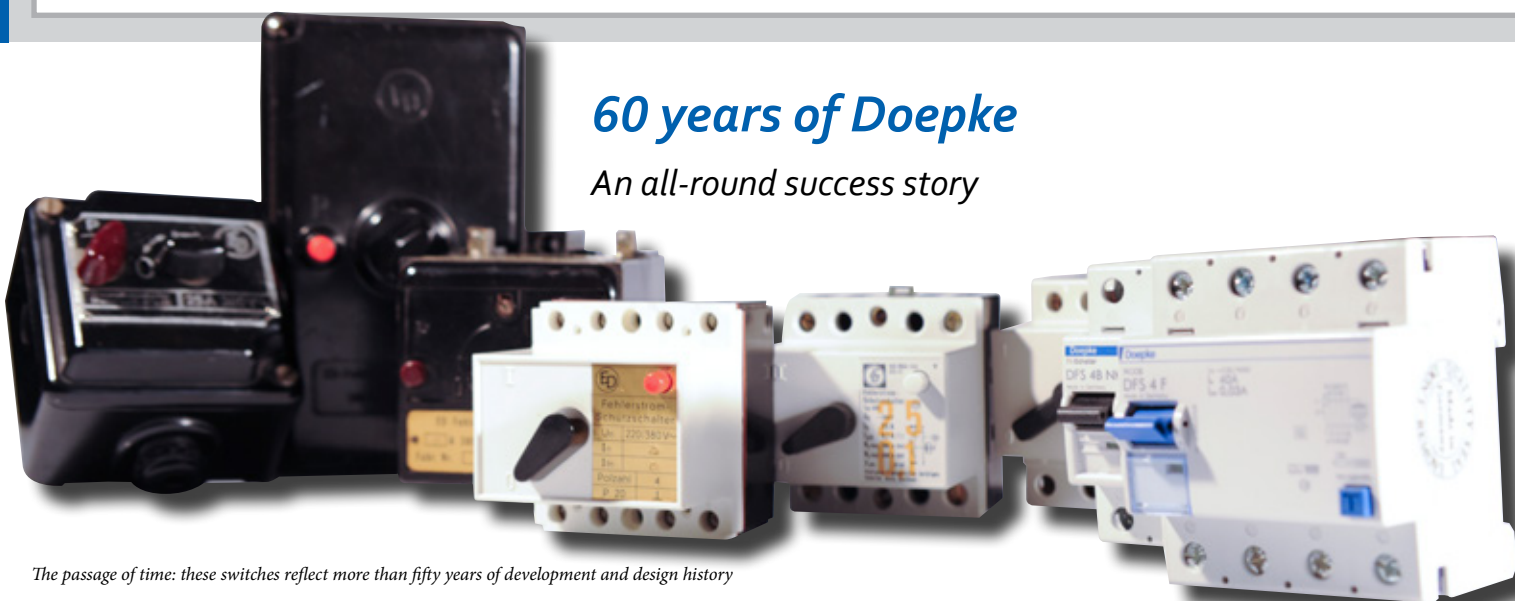
IN THIS ISSUE

60 years of Doepke	Latest news in Product Management: Melanie Brandes	The great trek	Bello's travels.....
New products for 2016:.....	New member in the Sales Office team: Mario Kuper	2016: a year of anniversaries	4
1	4	4	
3	4		



60 years of Doepke

An all-round success story



The passage of time: these switches reflect more than fifty years of development and design history

► We are delighted to celebrate our company's sixtieth anniversary this year. We want to take this opportunity to look back at the company's history and remind ourselves of our founders.

The company was first registered on 1 January 1956 as Doepke & Co. It was founded by Franz Doepke – responsible for the commercial aspects –

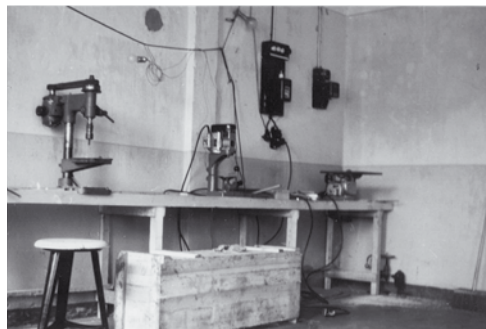
and Wilhelm Engels – responsible for technology and design.

Our location

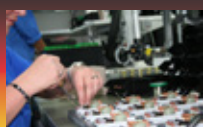
The company's headquarters have always been in Norden, Germany, but in several different locations over the years: it took some time, and several relocations, for us finally settle at the cur-

rent premises on the Leegemoor industrial estate. Between 1956 and 1963, the company was located on Großen Mühlenstraße, near the town centre. The company then relocated to a former school in the Süderneuland district, where it remained until 1970. In the six years thereafter, the company headquarters were on Doornkaatlohne, where the

► Continues on page 2



Manufacturing of the past and present: workstations at the first production site on Große Mühlenstraße (left), at the school in Süderneuland (centre) and the current electronics production in Norden



▼ Continued from page 1: 60 years of Doepke

town's financial heart used to beat together with a spirit-producing company of the same name, Doornkaat. Doepke made one final move to its current location on the Leegemoor industrial estate to the south of Norden. There is now plenty of room for new ideas and developments in an area covering 10,000 m².

Company history

From the very beginning, the company focussed on developing and manufacturing residual current circuit-breakers. However, it was difficult to market the circuit-breakers in the first few years as the devices – and the protection they offered – were still relatively unknown, much less a requirement. For Mr Doepke and Mr Engels there was only one thing left to do: they had to visit customers in person to explain about residual current circuit-breakers and their protective function, and to raise awareness of the necessity of these devices.

At the end of the 1970s, Joachim Hagemann and Manfred Schmidt took over the commercial and development departments, and then jointly took over the company management in 1995. During this time the number of employees grew from 25 people to today's 200 strong team working in Norden and at a second production location in Bickenriede (Thüringen). Our miniature circuit-breakers and accessories are manufactured here.

In 2009, Joachim Hagemann stepped down from



The first generation of Doepke workstations

Recipe for success

The sun has not always shone on our company over the last 60 years. There were difficult times that were overcome thanks to our employees providing their full support and a visionary management team.

Our high-quality products, upon which our customers can rely, help make our company the success it is today.

This quality is founded upon a high level of in-house production.

Departments such as Development, Construction, Tool Manufacture, Stamping, Turning, Plastic Injection Moulding, Trip and Electronics Production, as well as Final Assembly and Quality Control, work hand in hand. And let's not forget the commercial and advertising activities that are almost exclusively handled in-house.



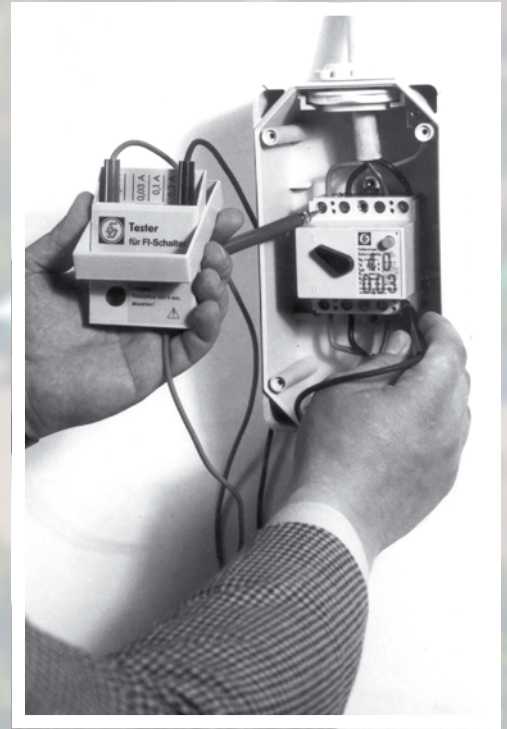
Old lathe that is still in use today



A current CNC milling machine

Doepke international

Doepke has not only made a name for itself as an expert in RCD technology nationally, but internationally too. Our two subsidiaries in Great Britain and the United Arab Emirates, each with approx. ten employees, contribute greatly to this success. The British subsidiary was founded in the mid-1970s, whereas the subsidiary in Dubai was only founded at the turn of the millennium. Nowadays, Doepke products are sold in over 40



▲ Joined-up thinking: Doepke's range always includes matching accessories

countries, with this number set to rise. It goes without saying that they are available throughout the world.

Looking at the international market, Doepke publications are increasingly available in Spanish, for example our datasheets, and our website is also maintained in several languages.

Our range of products

Our current product range includes residual current circuit-breakers, residual current operated circuit-breakers with integral overcurrent protection, circuit-breakers with residual current trip, modular residual current devices, RCMs, miniature circuit-breakers, switch-disconnectors, installation contactors, impulse switches, and twilight, float and pressure switches. The range is also complemented by our two building systems technology: Dupline and SI.

Another name for Doepke

Our expertise is in demand: in addition to our own products, Doepke develops and manufactures



Bevor du ins Bett gehst,
nimm noch 'n Söpkle,
drück' dien Kers ut
un dröhm van Doepke



Bevor du ins Bett gehst, nimm' noch 'n Söpkle (Schnaps), drück' deine Kerze aus und träum' von Doepke

Whether it is a logo, joke, rhyme or QR code: even our adverts reflect when they were first made



Doepke

**Mit Sicherheit an erster Stelle:
Protection Box**

Die Experten für Differenzstromschutztechnik

» mobiler allstromsensitiver Fehlerstromschutz
» einfachste Anwendung
» hoher Temperaturbereich dank Heavy-Duty-Ausführung

www.doepke.de



devices for some of the industry's biggest names. One of the reasons for this is our considerable flexibility: particularly with low and medium volumes, small- and medium-sized businesses are generally more likely to adapt their production to the market needs compared with industry giants. We can even produce unique devices as all the necessary supply chains are available in-house.

And here's another reason for other manufacturers to have their products manufactured by Doepke: we have continually worked on further developing and perfecting residual current circuit-breakers for decades, so our expertise in this area is extraordinarily high. As a result, there are a few top-performing Doepke devices that are unparalleled on the market. In an effort to protect humans and animals from dangerously high voltages – which has been the company's guiding principle for many years – Doepke is glad to make its technology available to serve a higher purpose, even under a different name.

Perspective

Building on its solid foundations, and working together with its visionary management team and reliable expert employees, Doepke is able to look toward the future with confidence. ■

New products for 2016:

» THE PROTECTION BOX

The Protection Box is a portable solid rubber distribution unit in protection class II. Its robust black housing is resistant to acids and alkalis, is unbreakable, and does not age. Its external metal parts are made of stainless steel – perfectly suited to conditions on building sites.

» DFS 4 NA RESIDUAL CURRENT CIRCUIT-BREAKER

In many situations, it is useful, or even specified by standards or installation regulations, for circuits to be equipped with an emergency switch function. The new DFS 4 NA provides an isolating device of this kind and compatible residual current protection together in one unit.

» TYPE F RESIDUAL CURRENT CIRCUIT-BREAKERS

Type F residual current circuit-breakers meet all requirements for conventional Type A residual current circuit-breakers and also detect residual currents with mixed frequencies deviating from 50 Hz.

» DFS 4 B SK MI RESIDUAL CURRENT CIRCUIT-BREAKERS

The DFS 4 B SK MI protects existing systems where the upstream protective measure is unknown or consists of a Type A residual current circuit-breaker.

» DEZ ENERGY COUNTERS

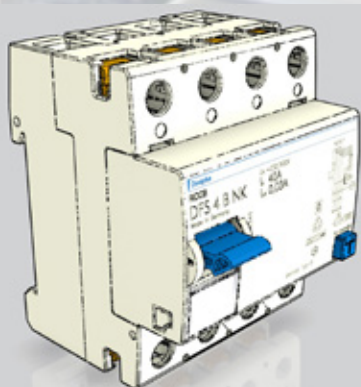
The counters allow energy costs to be calculated exactly, as well as consumption from individual devices and system parts to be recorded.

» DASY TC TWILIGHT SWITCHES

The new Doepke Dasy TC combines the classic twilight switch with a timer switch for individual lighting control. The additional TC ('Time Control') function makes it possible to turn off the light at certain times.

» QR CODES

In future, Doepke's residual current circuit-breakers will be supplied printed with a QR code. This will lead directly to the online product page. This page will not only contain detailed information, but it will also be possible to download operating instructions, datasheets, dimensional drawings and brochures.



▲ 3D visualisation of the latest residual current circuit-breaker

Latest news in Product Management: Melanie Brandes



Melanie Brandes has been in charge of the Control Devices, Building System Technology and Measuring and Monitoring Devices product area since the middle of 2015.

Ms Brandes moved from East Frisia to Berlin in 2008, where she studied Electrical Engineering and worked in the Development department of a small company. She returned home last year and now works in Product Management.

At the same time, she wants to complete her distance-learning Masters degree at the Beuth University of Applied Sciences in Berlin this year.

When not at work Ms Brandes enjoys reading, especially fantasy novels, getting close to nature while out walking or simply being in the garden, and is looking forward to the day when she has a house and a pony to call her own. ■

New in the Sales Office team: Mario Kuper

The sales team has recently been strengthened by the addition of Mario Kuper, who has taken over the areas previously covered by Stefan Eilerts (now responsible for Production Planning).

Having obtained his advanced technical certificate in 2014, Mr Kuper has been the contact person for the sales agency regions of Hamburg, Halle/Dresden, Freiburg, Stuttgart and Frankfurt since the beginning of the



year and is looking forward to your call. Away from the office, Mr Kuper spends his free time playing football, jogging and doing athletics.

The great trek

The 2015 Christmas celebrations began in the early afternoon with a wagon ride through Berumerfehn. Considering that the weather was rather more autumnal, it was certainly an achievement to create a Christmassy atmosphere. Joined together in high spirits, we all raised a glass and gave it our all, the weather soon became an aside. This was then followed by a tasty buffet with a traditional pork dish – Snirtjebraten – and curly kale at Gaststätte Lindenhof. The celebrations continued in a cosy atmosphere. ■



2016: a year of anniversaries

Many of our employees are also looking back on many years of service this year. Here's a list of some of the important milestones reached:

10 YEARS:

Gitta Dirks, Brigitte Janssen, Gerda Schuster, Sarah Wolthoff

25 YEARS:

■ Wilhelm Aden, Sonja Alrichs-Groon, Elke Bents-de Groot, Hans-Martin Bogena, Helga Dringenberg, Thea Flessner, Heiko de Groot, Frerich Heyen, Wolfgang Hoppen, Renate Hugon, Helga Ihmels, Edith Janssen, Martina Kähler, Helga Kuper, Ingolf Meints, Michael Müller, Michael Potsch, Mike Saathoff, Andreas Thiele

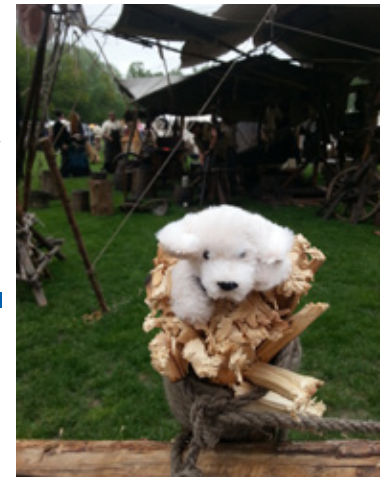
30 YEARS: Heinrich Goldenstein, Fred Hoppen, Anja Zimmer

40 YEARS: Johann Schoolmann

We would like to thank all those celebrating anniversaries for their many years of hard work, and hope that this relationship will continue in future. ■

Bello's travels

Travelling through time



Bello not only travels across continents, but he also travels through time – wherever he chooses. Last year, he was spotted at a medieval market in Rastede near Oldenburg, Lower Saxony. By all accounts, this "Medieval Fantasy Spectaculum" is the largest series of events of its kind and has now been running for over twenty years. The organisers particularly focus on the fantasy aspect: it is not a faithful reconstruction of medieval life, but rather a free interpretation that puts entertainment at the forefront. Every event not only features a core group of participants, but also different music groups, performers and merchants. And you cannot forget the ever-present camp where groups of role-players settle to immerse themselves in a medieval world for the weekend. ■

DATES/NOTES

**Middle East Electricity,
Dubai**
1–3/03
Stand S2E14,
German Pavilion

Light + Building, Frankfurt
13–18/03
Hall 8.0, Stand C 51

PUBLISHER

Doepke

Schaltgeräte GmbH

Stellmacherstrasse 11
26506 Norden, Germany

Tel.: +49 4931 1806-0
Fax: +49 4931 1806-101
E-mail: info@doepke.de
www.doepke.de

QUARTERLY QUOTE

*No act of kindness,
no matter how small,
is ever wasted.*

Aesop